



Continuous data archiving

Continuously downloading mechanical and electrical system logs into an industry standard SQL database, RC-Archive™ delivers a robust record of performance from any internet-connected BACnet® facility.



Better by design

www.reliablecontrols.com/RCA

TECH SPECS

Recommended Server Requirements

- Intel Core i5, 3GHz PC
- 4 GB RAM
- 10 GB hard disk space free, or higher, appropriate for archiving needs
- CD-ROM drive or Internet connection for software installation
- Network Interface Card (NIC) for Ethernet communications
- Windows 2008 Server R2 / Windows 7
- Microsoft SQL Server 2008 R2 Workgroup Edition/SQL Server 2012 Standard Edition (purchased separately for databases exceeding the 10 GB SQL Express database size limitation)
- Dedicated USB 2.0 port for RC-KEY licensing (soft license optional)
- Ensure IT management processes do not allow SQL database size limitations to be exceeded

FEATURES

BACnet Support

- Archives BACnet Single-point Trend Log, BACnet Multipoint Trend Log and BACnet Runtime Log objects
- Archives Trend Log objects from any IP connected third-party BACnet system

RCP Support

- Archives RCP Trend and Runtime Logs

Easy Setup

- Wizards guide the operator to provide easy setup
- Intuitive data table names created
- Simple to archive all Trend Logs and Runtime Logs in a system, network, or controller
- Enable All feature allows convenient filtering by point type and interval length
- Browse through multiple controllers and create archives from multiple buildings or systems
- Microsoft SQL Server 2008 R2 Express Edition included with software

Rigorous Logging

- Efficient log file structure
- Continues to log data to file system while SQL database unavailable
- Multiple simultaneous instances supported

Graphing

- Requires RC-Studio®, or a browser with RC-Reporter™, RC-WebView™ access, or a MACH-ProWeb™ controller
- Graphing with zoom, pan, and paging capabilities
- Simultaneously graph archive data with real-time data

Exporting

- Export to Microsoft Excel
- Standard SQL database accessible by third-party applications

Automation

- RC-Archive™ will log data without user intervention
- Runs as a Microsoft Windows service
- Archive size only limited by SQL license and hard disk space
- Broadcast server status notifications to user-defined email recipient list using SMTP

Certification (Pending)

- BTL Listed (B-Oth)

ORDERING

RC-AR3-200

- License allowing 200 points to be archived c/w RC-KEY (USB Software Key)

RC-AR3-200A

- Adds 200 points to existing license (must have previously purchased RC-AR3-200)
- Upon purchase of the 24th unit of RC-AR3-200A, the license is tagged as a site license, equivalent to RC-AR3-5000

RC-AR3-5000

- Site license allowing unrestricted number of points to be archived c/w RC-KEY (USB Software Key)

RC-AR3-S200

- License allowing 200 points to be archived c/w soft license (no USB Key required)

RC-AR3-S200A

- Adds 200 points to existing soft license (must have previously purchased RC-AR3-S200)
- Upon purchase of the 24th unit of RC-AR3-S200A, the license is tagged as a site license, equivalent to RC-AR3-S5000

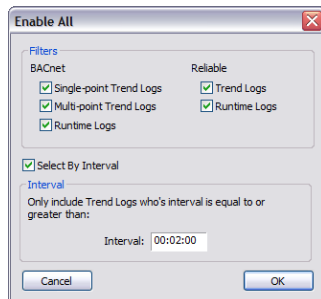
RC-AR3-S5000

- Site license allowing unrestricted number of points to be archived c/w soft license (no USB Key required)

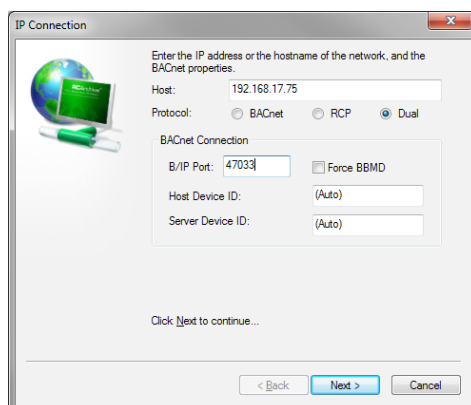
RC-AR3-M

- RC-Archive software manual

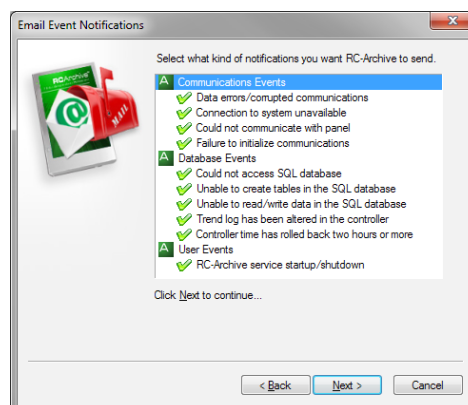
SCREEN CAPTURES



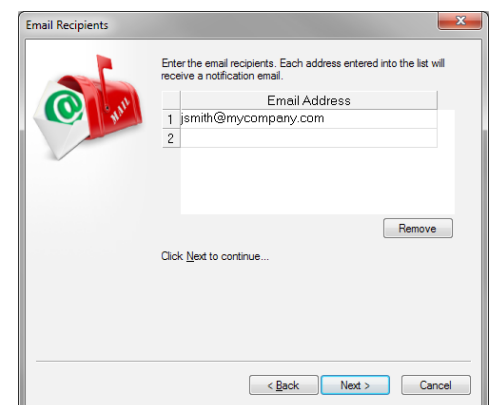
Enable All option



IP Connection to any BACnet or RCP facility



Email Event Notifications sent to user-defined recipient list

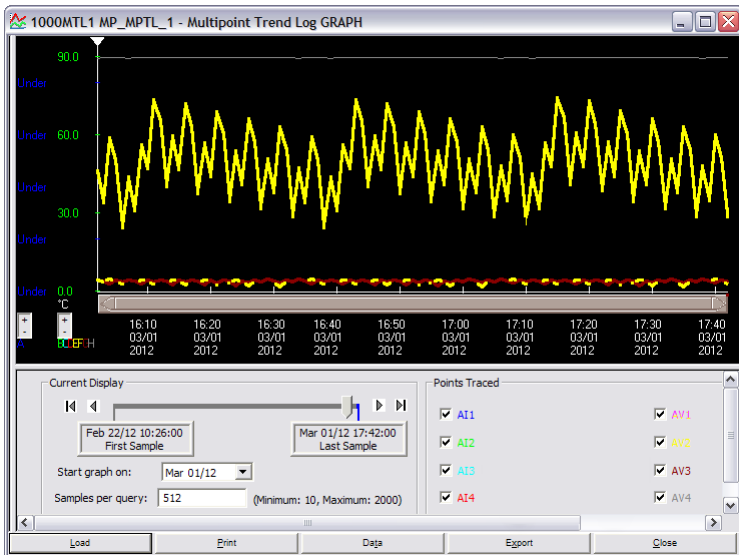


Email Recipients

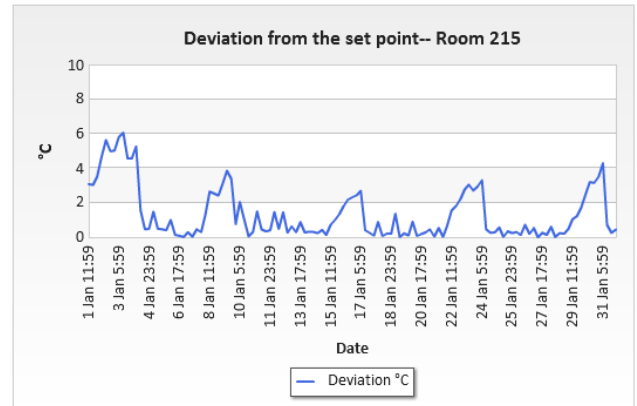
SCREEN CAPTURES



Single-point Trend Log Accessed Through RC-Studio®

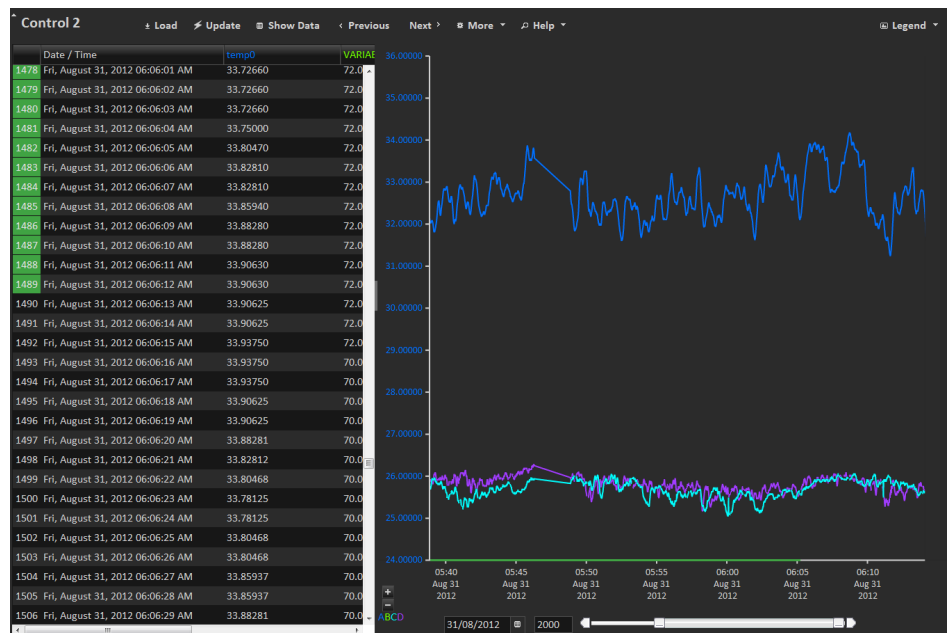


Multipoint Trend Log Accessed Through RC-Studio®



Date	Deviation °C
1 Jan 11:59	3.08
1 Jan 17:59	3.03
1 Jan 23:59	3.52
2 Jan 5:59	4.66
2 Jan 11:59	5.62
2 Jan 17:59	4.98
2 Jan 23:59	5.02
3 Jan 5:59	5.80
3 Jan 11:59	6.06
3 Jan 17:59	4.55
3 Jan 23:59	4.56
4 Jan 5:59	5.25
4 Jan 11:59	1.57
4 Jan 17:59	0.46

Trend Log data viewed by Data Range Component in RC-Reporter™



Trend Log accessed through MACH-ProWeb™ controller