

# Web access for the masses

RC-WebView™ 2.0 from Reliable Controls® is a powerful BACnet Web server solution that allows MS-Internet Explorer users to conveniently access any Internet-connected BACnet controls system configured with RC-Studio® 2.0 System Groups.



Better by design

[www.reliablecontrols.com/RCWV](http://www.reliablecontrols.com/RCWV)

## TECH SPECS

### Minimum Server Requirements

The following list is the absolute minimum server requirements accommodating two simultaneous users visiting one or two sites.

- Pentium III 1.5 GHz
- 512 MB RAM
- 1 GB available hard disk space
- CD-ROM drive
- 10/100 Network Interface Card  
*Microsoft Windows XP, Microsoft Windows Server 2003, Microsoft Windows Vista (Business or Ultimate), Microsoft Windows Server 2008*

### Recommended Server Requirements

The following list is the recommended server requirements accommodating ten or more simultaneous users visiting multiple sites.

- Quad-core 2 GHz
- 2 GB RAM
- 1 GB available hard disk space
- CD-ROM drive
- Gigabit Network Interface Card
- Microsoft Windows Server 2008

## FEATURES

### BACnet Web Server

- BACnet® stack at core of the application
- Access any third-party Internet-connected BACnet® system configured with RC-Studio® Groups
- Internet Explorer browser support
- Easy configuration for new users
- Secure password setup
- Able to view, edit, override inputs, outputs, variables, and schedules
- Able to graph/print Trend Logs
- Able to view/acknowledge alarms

### Seamless Integration

- Uses the same graphic files as RC-Studio® 2.0
- No custom HTML pages required
- Fully configurable online help allows help files to be tailored to any application

### Audit Trail

- Automatically records every change made by a Web user
- Tracks date, time, user, point effected, action, user embedded notes, etc.
- Always controlled by password security level

### RC-Archive Interface

- Client access to long-term Archive Data
- Search databases for exception values
- Export data to Excel or CSV

## ORDERING

### RC-WEB-1

- RC-WebView™ Software – Single System License

### RC-WEB-50

- RC-WebView™ Software – Fifty System License

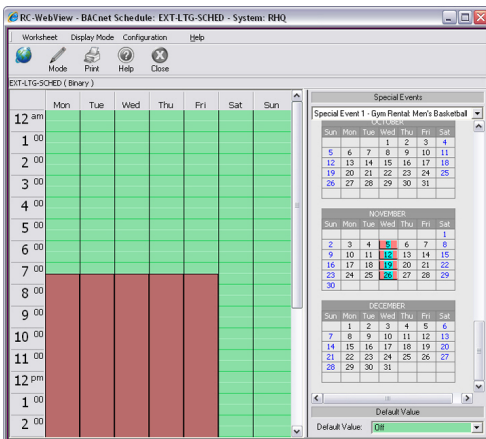
### RC-WEB-A

- RC-WebView™ Software – Additional System License

### RC-WEB-M

- RC-WebView™ Software Manual

## SCREEN CAPTURES



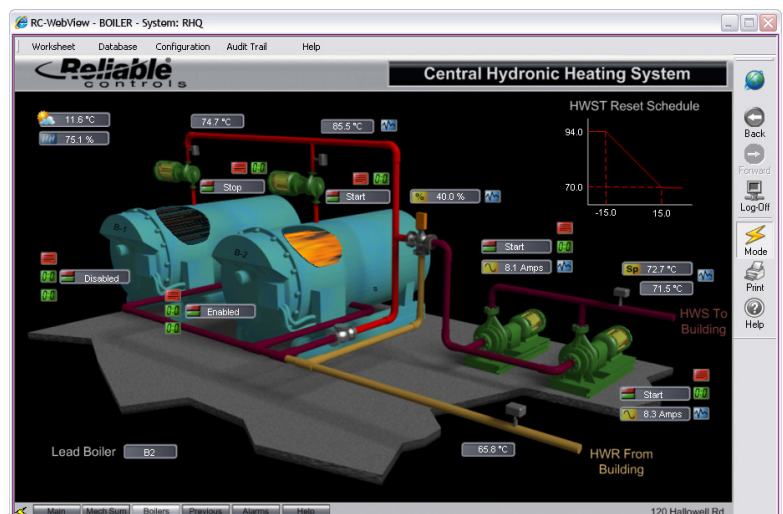
Schedule

System Name	Alarm Time	Alarm Type	Alarm Message	State	Source
RHQ	Sep 26 2008, 13:10:05	2	SMT Heat Pump HP-3 Supply Fan Failure	Reset	SMT Room
RHQ	Oct 07 2008, 12:54:30	5	Out of Range	Reset	MACH-ProCom
RHQ	Oct 10 2008, 13:19:10	System	SUBPANEL IS OFFLINE - 001-SUBA-002	Reset	VP-Finance
RHQ	Oct 12 2008, 18:28:37	4	FC-4 Server room Fan Failure * NOTIFY IF IMMED	Reset	ServerRoom
RHQ	Oct 12 2008, 18:28:38	2	FC-1 1st Floor South Offices Fan Failure	Reset	SouthOff
RHQ	Nov 05 2008, 13:53:01	63	Server room temperature is too high * NOTIFY Vin	Alarm	ServerRoom
RHQ	Nov 18 2008, 07:01:59	2	EF-4 Lower Women's Washroom Fan Failure	Reset	MACH-Global
RHQ	Nov 18 2008, 13:40:28	2	EF-1 Compressor Room Fan Failure	Reset	MACH-Global

Current Alarms



Trend Log



System Group